

# Accurate materials data is essential to legal compliance

## HPE Compliance Data eXchange

### Insights

- Standardise MDS and CMD creation and exchange.
- Minimise risk associated with managing and reporting hazardous materials.
- Increase costs-efficiencies with procure and production processes.
- Do all this with HPE CDX.

Information on materials in the supply chain must comply with legal requirements—HPE CDX is your answer to compliance, efficiency, and quality.

Requesting and evaluating information on materials from the supply chain is essential to an organisation's efficiency and quality. It's also vital to managing and reporting hazardous substances, which are required to meet legal requirements that vary by region and country. As well, risk management requires reliable data for material risk assessment.

Cost-efficiency influences procurement and production processes, and recycling and scrapping. This requires additional data and transparency about supplied products. An increase in turnover involves a new approach to sustainability. Minimising disposal risks with adequate documentation and avoiding problematic product contents help ensure a positive corporate image and stable brand value.

To do all of this, turn to Hewlett Packard Enterprise (HPE) Compliance Data eXchange (CDX). With it, you can create and exchange standardised Material Data Sheets (MDSs) and Conflict Minerals Declarations (CMDs).

product lifecycle management systems by means of web services and data exchange between itself and the International Material Data System (IMDS), ensuring high quality, timely and accurate reports.

### Analyses and reports

With CDX, you can analyse an individual MDS, several in-house MDSs, or several suppliers MDSs according to the source and disposition statement. You can also create an MDS report, which provides an overview of the entire MDS, including all ingredients and regulations.

The CMD quality report lets you check yours with predetermined or self-defined quality profiles. It calculates data quality and monitors quality improvement. Results can be exported or displayed in graphics and statistics. After, email notifications can be sent to suppliers when the supplied CMDs do not fulfil data-quality expectations.

### Substance and material management

A centrally provided catalogue for substances and materials ensures data quality in CDX. There are 10,000+ standard metals with compositions and norms, and also standard material and chemical pure substances.

### Embedded CM Manager

Conflict Minerals (CM) Manager supports creating a CMD report. The latest CM reporting template—with import/export functions—is provided in the CDX system. You can also work with already published EICC-GeSI CMD templates, and add additional information, such as certificates, in attachments. Already accepted and sent MDSs can be attached to a CMD.

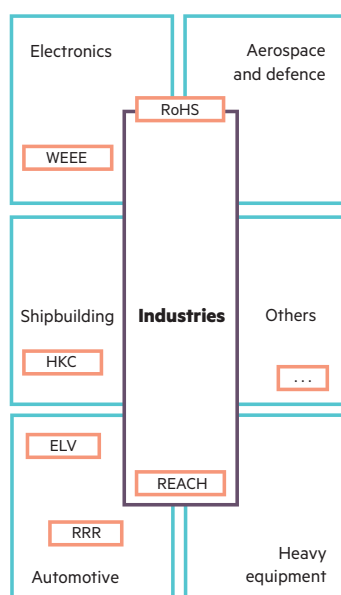


Figure 1: CDX supports numerous legal regulations and ordinances<sup>1</sup>

## Functionalities of CDX services

### Embedded workflow management

Through your CDX inbox and outbox, you can forward MDSs and CMDs quickly and transparently to your customers and suppliers. It all starts with an email process to invite companies that are not yet registered in CDX. The bulk mailing feature gives you the additional option to send inquiries to several suppliers in one transaction. CDX supports integration into your enterprise resource planning and

<sup>1</sup> REACH (XIV and XVII), SVHC, RoHS (with exceptions), IEC62474, conflict minerals, batteries, packaging, ELV, GADSL, and HKC, and integration of user-defined substance lists.

The process as ideally envisioned for the complete value chain

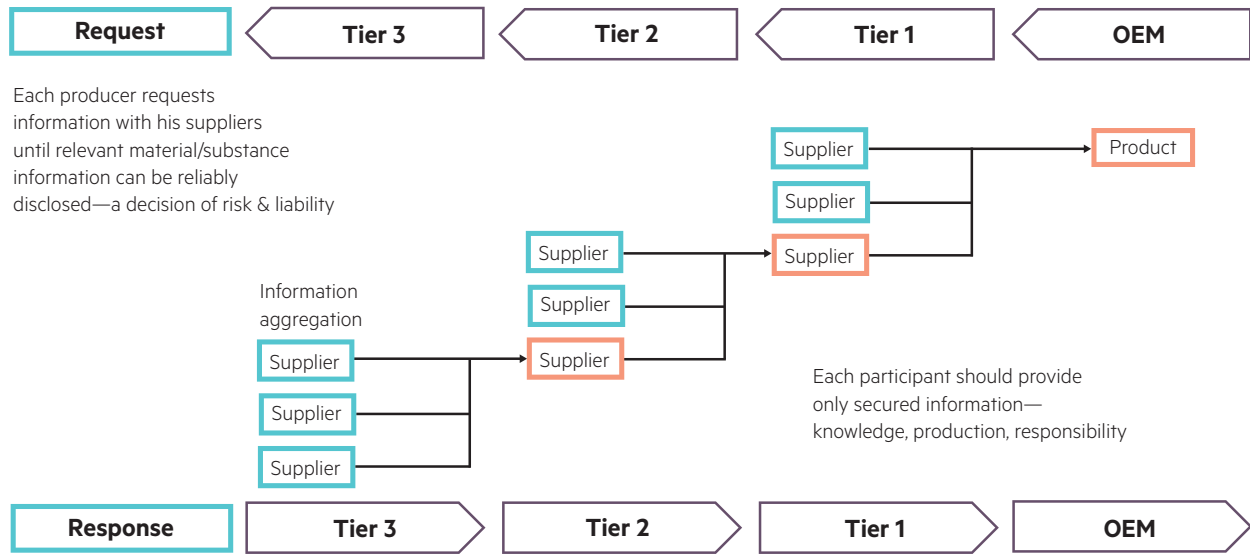


Figure 2: Sourcing of compliance data

CDX maps material composition based (partial) products or the entire assembly, adhering to the European Union REACH regulation—once an article, always an article.

A new assistant feature—Regulation Wizard—facilitates creating an MDS structure. It guides you through the supported legal regulations and simplifies provisioning of the required substances to create an MDS.

### Declarations supported

**One-level declaration**—The supplier confirms—in a declaration of conformity—that the concentrations in a specified material, component, or assembly group do not exceed the permitted maximum values of the defined substances. It serves as confirmation of the legal specifications or other proprietary provisions agreed on between you and your supplier.

**Partial declaration**—Material declaration based on a list of substances—your organisation defines the disclosure level of certain substances. If these form part of the product, the material declaration identifies all substances with a certain proportion that you may have a special interest in.

**Full-material declaration (FMD)**—All substances for producing of products are registered and disclosed. All legal and proprietary provisions must be shown. By means of “joker” substances, which are relevant for certain companies, they can be anonymised or marked as confidential. The exceptions are legally restricted or prohibited substances or those subject to declarations.

### Other functions in cooperation with HPE Partners and IMDS

**SupplyOn**—By using Single-Sign On (SSO), SupplyOn suppliers are automatically embedded in the CDX system.

**SAP**—In cooperation with SAP®, HPE developed an interface to exchange data, which is supported by both systems.

**IMDS CM Analyser**—This enables IMDS users to analyse suppliers’ existing MDSs—with regard to conflict minerals, and prepare and automatically send inquiries to them by connecting to the CDX system. Suppliers are requested to make CMDs available in CDX.

### The best solution

Turn to HPE; with HPE CDX you can standardise, create, and exchange MDS and CMD, comply with legal requirements, and increase your efficiency and quality.

Learn more at [www.cdxsystem.com](http://www.cdxsystem.com)



Sign up for updates

★ Rate this document