



Compliance Data Exchange (CDX) Conflict Minerals Declaration (CMD) Manager Use and Latest Enhancements

Chuck LePard, CDX Americas Representative

April 18, 2019

CDX CMD Webinar Agenda

Speaker Introduction

Challenges Companies Face Today

Growing Number of Compliance Regulations

Brief Background of CDX

Benefits of CDX

Latest Enhancements

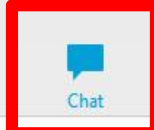
CDX CMD Demonstration

Pricing Structure

Q & A

Closing

WebEx Logistics



2018_CD_X_MDS_Compliance-DXC.pptx - PowerPoint

FILE HOME INSERT DESIGN TRANSITIONS ANIMATIONS SLIDE SHOW REVIEW VIEW DEVELOPER ACROBAT

LePard, Chuck

Compliance Data Exchange (CDX)

Regulatory Compliance Reporting using CDX

Chuck LePard, CDX Americas Representative

Copyright 2018 DXC Technology. Proprietary content. All rights reserved.

Speaking: CDX SERVICE TEAM DXC

- ▶ Panelists: 2
- ▶ Attendees:

Hand icon, Share icon

Chat

from CDX SERVICE TEAM DXC to all participants:
hello.

Send to: Host

Select a participant in the Send to menu first, type chat message, and send...

Send

Q&A

All (0)

Ask: All Panelists

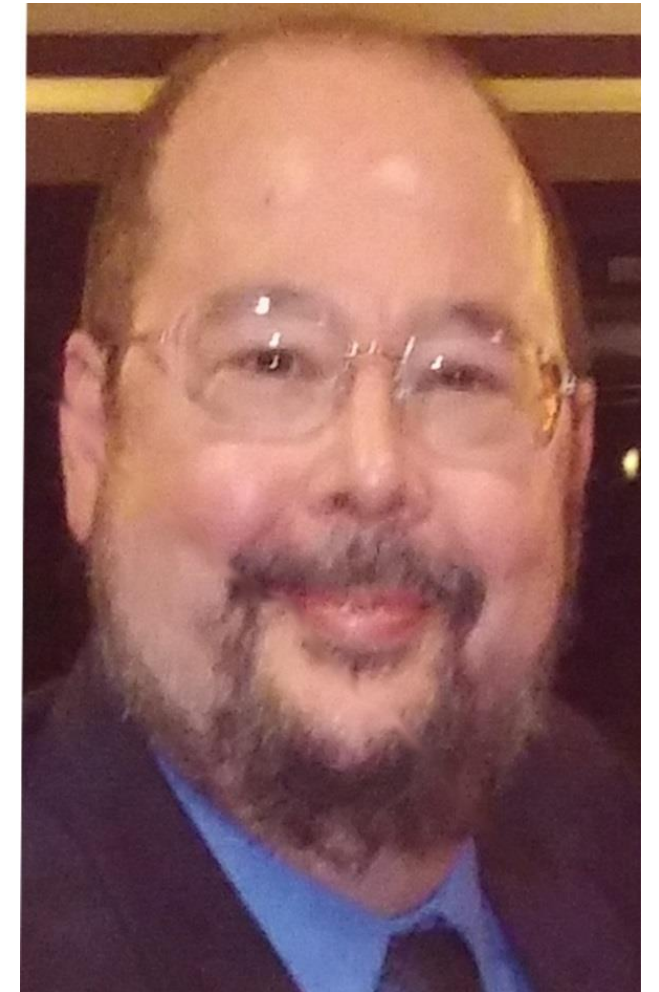
Select a panelist in the Ask menu first and then type your question here. There is a

Send

Speaker Introduction

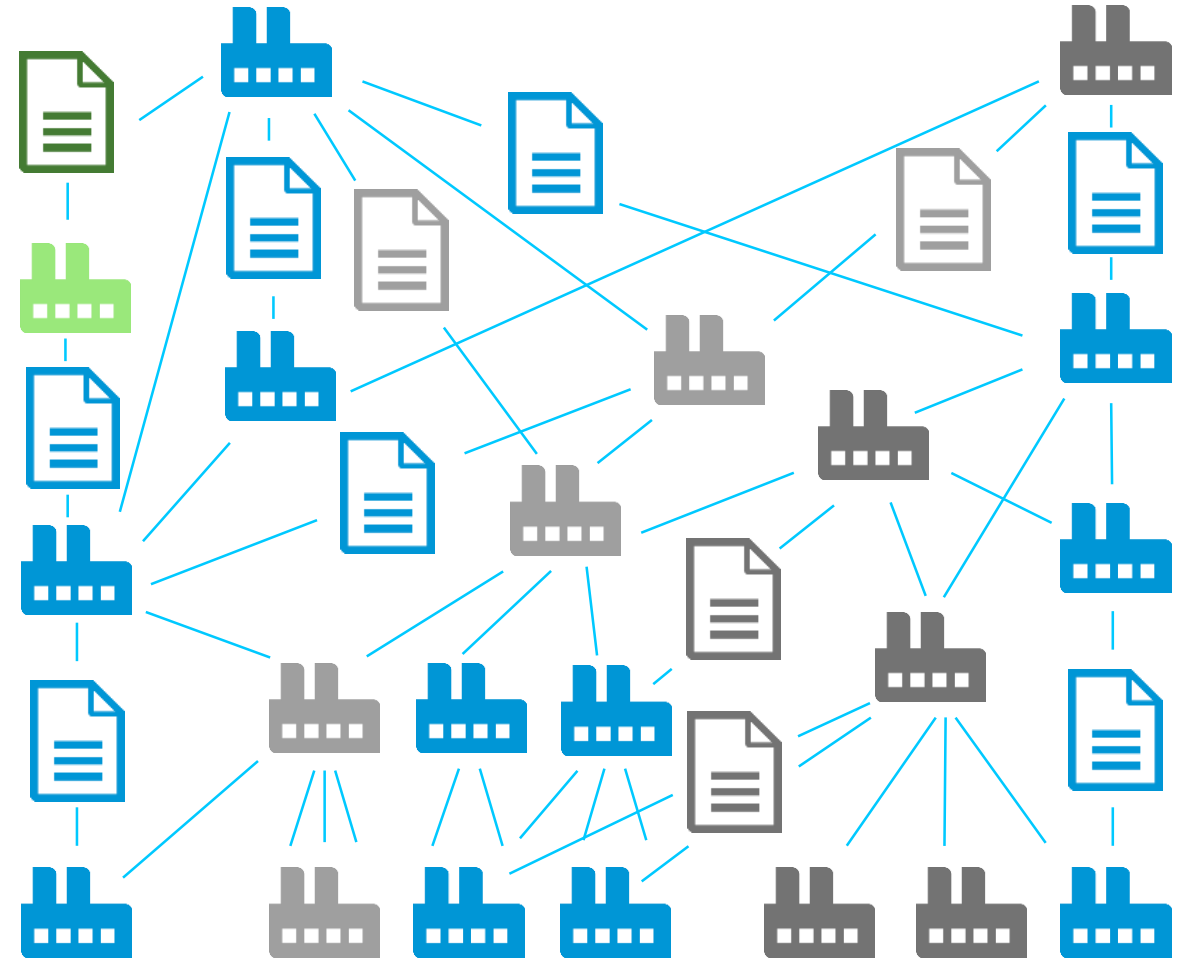
Chuck LePard

- DXC Technology, Applications Delivery, Engineering & Mfg. Solutions
- Senior Consultant / IMDS and CDX Americas Representative
- 30+ years with EDS / HP /Hewlett Packard Enterprise / DXC Technology
- Member of IPC 2-18H 1755 C.M. Data Exchange Standard. Committee
- Member of AIAG Automotive Conflict Minerals Work Group
- Past member of RMI Electronics Due Diligence & Smelter Engagement
- Focused on all Engineering and Manufacturing environments
- Extensive experience in Automotive, Military/Defense, Glass, Electronics, HVAC, Shipbuilding, Steel, Utilities, Proteins, Chemicals
- Decades of expertise in plant floor systems and engineering systems, especially MES/SCADA, PLM, BOM management, quality management
- Degrees in Electrical & Computer Engineering and Computer Science



You're Challenged with Disparate Information Distributed throughout Your Supply Chain

- The information you need exists in many different places, and in many different forms
- Sending information in email attachments or EDI means every company must have a system in place to handle responses, and it exposes proprietary business information to interception
- Data collection throughout the supply chain is mostly arbitrary, sometimes even for same downstream consumer, depending on segment / scheme
- A lack of standard forms means every supplier reports the same information in many different formats, with no guarantee of accuracy
- Most consumers at the downstream end have their own means of analysis, while upstream suppliers possess the knowledge
- All industries face the same problem



The Answer is CDX DXC's Proven Solution for Conflict Minerals Reporting

CDX leverages the proven functionality of our International Material Data System (IMDS), along with our expertise in Cloud computing, to provide manufacturers with a secure, centralized unbiased third-part web solution which accurately gathers and analyzes material content data throughout your entire global supply chain. CDX uses an established, common framework that provides quality global reporting to various legal requirements whether you manufacture, assemble or sell.



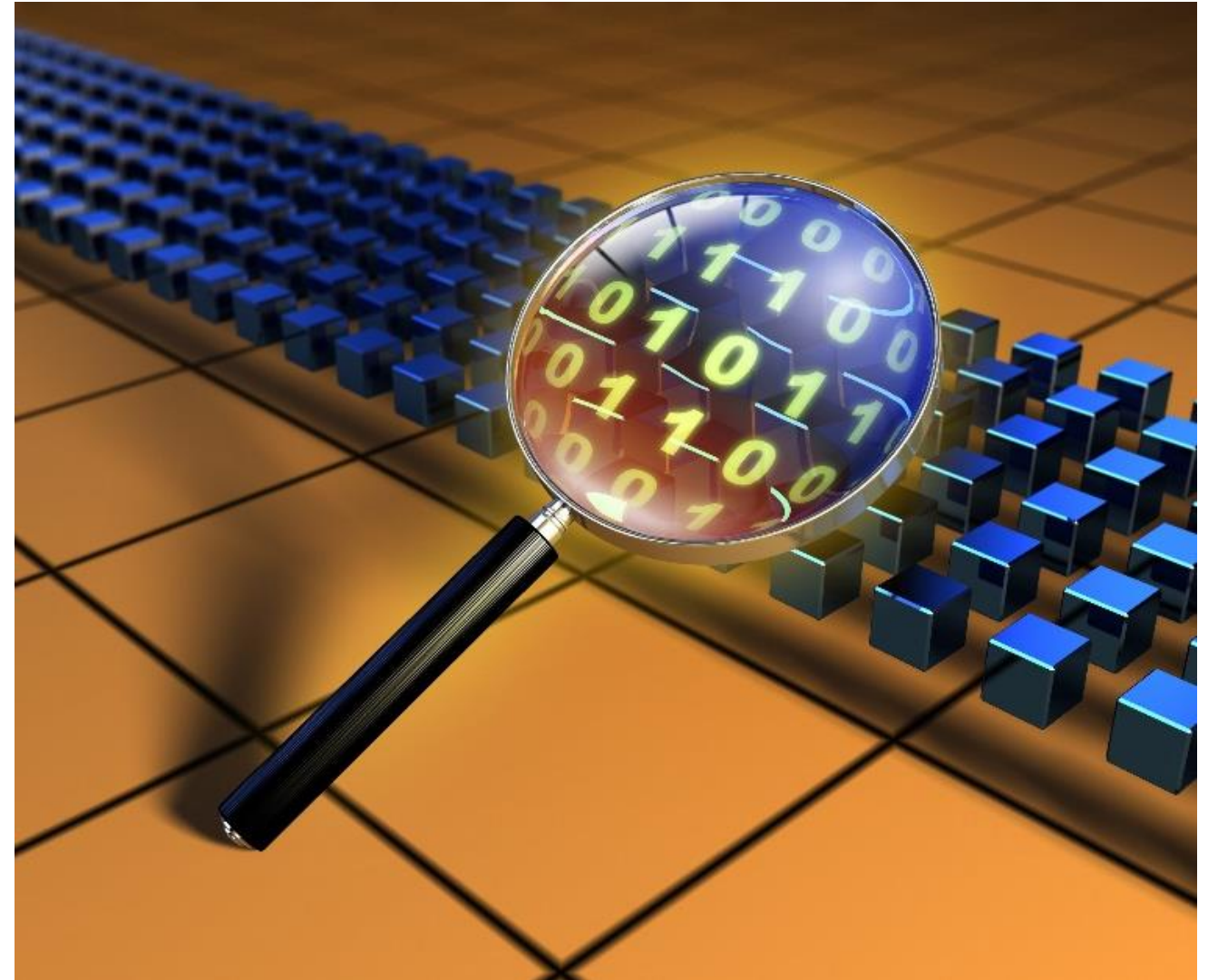
Benefits of Using CDX

CDX provides the following advantages to its customers:

- Saves manual effort, time and money while gaining a better overview, higher quality data and faster access to information for compliance reporting
- Uses services in a flexible manner, based on a “pay per use” approach
- Meets industry requirements for reporting and analysis
- Aggregates information while providing high-level security and confidentiality
- Provides data efficiency by providing only the information related to a company’s products, and requests material information for components and materials from that company’s suppliers, resulting in the most efficient data collection
- Requires no investment for hardware or software, or time-consuming implementation projects
- Works well within all industries and geographies

CDX Significantly Improves the Quality of Information

- The submissions you receive from suppliers through emails or file submissions generally contain erroneous data – there's no way to ensure accuracy, even when using industry standard formats
- CDX automatically conducts more than 100 validation checks
- You receive more accurate, higher quality CMD supplier submissions, saving you and your supplier time and money and improving your CMD quality



Is Conflict Minerals Really the Only Concern?

Filter: REACH Annex XIV

REACH

- Printed Circuit Board Assembly
 - 0.01 - 0.05% PCB-Capacitor surface (8c)
 - 100.0% PCB-e-plate SnPb3 (electrodeposited Tin-Lead Coatings)
 - 0.01 - 0.2% Carbon
 - 0.0 - 0.04% Sulphur
 - 2.0 - 5.0% Lead
 - Rest 96.375% Tin
 - 0.1 - 0.5% PCB-Ceramic capacitors <125 V AC, <250 V DC (10c), High Component Load
 - 100.0% PCB-ceramics with lead (10c), High Comp Load
 - 0.0 - 0.5% Diboron-trioxide
 - Rest 75.2% Barium-titanium-trioxide
 - 2.0 - 5.0% Bismuth titanium oxide
 - 0.0 - 0.5% Lead titanium zirconium oxide
 - 8.0 - 10.0% Neodymium Titanate
 - 0.1 - 1.0% Lead-monoxide
 - 0.5 - 3.0% Lead-titanium-trioxide
 - 0.0 - 0.5% Ruthenium(IV)oxide
 - 4.0 - 8.0% Silica, vitreous
 - 0.5 - 2.0% Miscellaneous**
 - 1.0 - 3.0% Zinc oxide
 - 0.01 - 0.05% PCB-High Temp solder (8e)
 - Carbon Steel (1010)
 - Rest 99.405% Iron
 - 0.595% Confidential Substances
 - 2.0 - 5.0% PCB-Solder S-Sn96Ag3Cu1(Sn96,5Ag3Cu0.5)
 - 100.0% PCB-Solder S-Sn96Ag3Cu1(Sn96,5Ag3Cu0.5)
 - Rest 95.744% Tin
 - 0.0 - 0.1% Lead
 - 0.0 - 0.1% Antimony
 - 0.0 - 0.1% Bismuth
 - 0.0 - 0.1% Cadmium
 - 0.3 - 0.7% Copper
 - 0.3 - 0.7% Indium
 - 2.8 - 3.2% Silver
 - 0.0 - 0.001% Aluminium (metal)
 - 0.0 - 0.03% Arsenic
 - 0.0 - 0.02% Iron
 - 0.0 - 0.001% Zinc (metal)

Filter: RoHS

RoHS

- Printed Circuit Board Assembly
 - 0.01 - 0.05% PCB-Capacitor surface (8c)
 - 100.0% PCB-e-plate SnPb3 (electrodeposited Tin-Lead Coatings)
 - 0.01 - 0.2% Carbon
 - 0.0 - 0.04% Sulphur
 - 2.0 - 5.0% Lead
 - Rest 96.375% Tin
 - 0.1 - 0.5% PCB-Ceramic capacitors <125 V AC, <250 V DC (10c), High Component Load
 - 100.0% PCB-ceramics with lead (10c), High Comp Load
 - 0.0 - 0.5% Diboron-trioxide
 - Rest 75.2% Barium-titanium-trioxide
 - 2.0 - 5.0% Bismuth titanium oxide
 - 0.0 - 0.5% Lead titanium zirconium oxide
 - 8.0 - 10.0% Neodymium Titanate
 - 0.1 - 1.0% Lead-monoxide
 - 0.5 - 3.0% Lead-titanium-trioxide
 - 0.0 - 0.5% Ruthenium(IV)oxide
 - 4.0 - 8.0% Silica, vitreous
 - 0.5 - 2.0% Miscellaneous**
 - 1.0 - 3.0% Zinc oxide
 - 0.01 - 0.05% PCB-High Temp solder (8e)
 - Carbon Steel (1010)
 - Rest 99.405% Iron
 - 0.595% Confidential Substances
 - 2.0 - 5.0% PCB-Solder S-Sn96Ag3Cu1(Sn96,5Ag3Cu0.5)
 - 100.0% PCB-Solder S-Sn96Ag3Cu1(Sn96,5Ag3Cu0.5)
 - Rest 95.744% Tin
 - 0.0 - 0.1% Lead
 - 0.0 - 0.1% Antimony
 - 0.0 - 0.1% Bismuth
 - 0.0 - 0.1% Cadmium
 - 0.3 - 0.7% Copper
 - 0.3 - 0.7% Indium
 - 2.8 - 3.2% Silver
 - 0.0 - 0.001% Aluminium (metal)
 - 0.0 - 0.03% Arsenic
 - 0.0 - 0.02% Iron
 - 0.0 - 0.001% Zinc (metal)

& Others!

Filter: Conflict Minerals

CMD

- Printed Circuit Board Assembly
 - 0.01 - 0.05% PCB-Capacitor surface (8c)
 - 100.0% PCB-e-plate SnPb3 (electrodeposited Tin-Lead Coatings)
 - 0.01 - 0.2% Carbon
 - 0.0 - 0.04% Sulphur
 - 2.0 - 5.0% Lead
 - Rest 96.375% Tin
 - 0.1 - 0.5% PCB-Ceramic capacitors <125 V AC, <250 V DC (10c), High Component Load
 - 100.0% PCB-ceramics with lead (10c), High Comp Load
 - 0.0 - 0.5% Diboron-trioxide
 - Rest 75.2% Barium-titanium-trioxide
 - 2.0 - 5.0% Bismuth titanium oxide
 - 0.0 - 0.5% Lead titanium zirconium oxide
 - 8.0 - 10.0% Neodymium Titanate
 - 0.1 - 1.0% Lead-monoxide
 - 0.5 - 3.0% Lead-titanium-trioxide
 - 0.0 - 0.5% Ruthenium(IV)oxide
 - 4.0 - 8.0% Silica, vitreous
 - 0.5 - 2.0% Miscellaneous**
 - 1.0 - 3.0% Zinc oxide
 - 0.01 - 0.05% PCB-High Temp solder (8e)
 - Carbon Steel (1010)
 - Rest 99.405% Iron
 - 0.595% Confidential Substances
 - 2.0 - 5.0% PCB-Solder S-Sn96Ag3Cu1(Sn96,5Ag3Cu0.5)
 - 100.0% PCB-Solder S-Sn96Ag3Cu1(Sn96,5Ag3Cu0.5)
 - Rest 95.744% Tin
 - 0.0 - 0.1% Lead
 - 0.0 - 0.1% Antimony
 - 0.0 - 0.1% Bismuth
 - 0.0 - 0.1% Cadmium
 - 0.3 - 0.7% Copper
 - 0.3 - 0.7% Indium
 - 2.8 - 3.2% Silver
 - 0.0 - 0.001% Aluminium (metal)
 - 0.0 - 0.03% Arsenic
 - 0.0 - 0.02% Iron
 - 0.0 - 0.001% Zinc (metal)



CDX Enhancements

Ongoing improvements expand Functionality and Performance

- **The needs of our customers are at the center of everything we do**
- **Many CDX enhancements come from ongoing dialogue with our customers**
- **These ongoing enhancements and refinements ensure that CDX best serves our customers' compliance requirements now and in the future**
- **We stay ahead of compliance regulations across industries**

CDX Conflict Minerals Manager Recent Evolution

2015 Q2 – CDX 4.1 Bulk CMD Request Import

2015 Q3 – CDX 4.2 Improved Request & Response Mgmt, Quality Analysis, IMDS CM Analyzer

2015 Q4 – CDX 4.3 Email deficiency reports, enhanced web services, network performance index

2016 Q1 – CDX 4.4 REACH Update, China RoHS, California Proposition 65, CMRT 4.10

2016 Q2 – CDX 5.0 Q1-7 Rollup, More export options, enhanced notifications, added WebServices

2016 Q4 – CDX 5.1 Menu Restructuring, Credit Card ordering, Import CMRT versions, CMRT 4.20

2017 Q1 – CDX 5.2 CMD Request comments and enhanced in-house system interface

2017 Q2 – CDX 5.3 CMRT 5.0

2017 Q3 – CDX 5.31 CMRT 5.01

2017 Q4 - CDX 5.32 CMRT 5.10

2018 Q1 – CDX 5.4 (Feb. 28!) CMD Request Enhancements, Onboarding Package Service

CDX Conflict Minerals Manager Recent Evolution

Enhanced Request Functionality

- Send additional requests to a supplier company – even if the company is not activated.
- Receive a registration confirmation email, when the supplier is activated in CDX.
- Request Outbox permits search of client pre-registered companies
- Request message will inform requestor about undeliverable requests, if target mail supports.
- Attachments for requests to non-registered companies
- Notification emails contain information to identify the request sender company.
- CDX users may use the same email address in different company registrations.
- Bulk Request templates formatting (e.g. date format, conditionally required columns, help text
- Multiple Part Numbers per request

New CDX Supplier Onboarding Service Package

- To support your onboarding process, we offer now a service package consisting of a CDX license including the supplier onboarding service. The requirements and the services for supplier onboarding which are provided by our partner compliance professional can be found in the [service description](#).

CDX Web Services

- **All new features available though Web user interface are also available via Web Services**

Interactive CDX CMD Demonstration

- **This CDX CMD demo will last about 30-40 minutes.**
- **Your audio line is muted until Q&A at the end.
Please use the Chat or Q&A if you have a question.**
- **Feel free to ask feature-specific questions as we go.**
- **Additional question time will be available after the demo.**
- **Thank you for your time and attention today.**

Importing your company's Own CMRT

When importing a CMRT, CDX determines if it is owned (belongs to) your company, or is from a supplier. The process is exacting, and causes issues for users who do not understand it.

To import an Owned CMRT:

1. The Company Name on the CMRT Declaration tab must be a character-by-character (case insensitive) match for the CDX Company Name in Administration... Company.
2. If the CMRT company unique identifier is not blank, it must be an exact match for the company DUNS number in CDX Administration... Company.
3. The "Contact Name" in the CMRT Declarations tab must be a "CMD Contact" Person in Administration... User.
 - A. CMRT Contact name must contain (case insensitive) CDX User CMD Contact First Name and Last Name.
 - B. CMRT Contact must be listed as a CDX CMD Contact.
 - C. CMRT Email - Contact" must match (case insensitive) same CDX CMD Contact User email.

If either of 1 or 2 do not match, CDX will identify the CMRT as coming from a supplier.

If 3 A, B, or C do not match, CDX will display an error, and the import will be interrupted.

4. The "Contact" and the Authorizer must grant permission to use the " Person in Administration... User.

Accepting imported supplier CMRTs requires a CDX CMD Manager license.

Companies without a license will be able to import a supplier CMRT, but will not be able to use it.

Questions and Answers

CDX Pricing is Based on Usage

Pricing is simply, straightforward and transparent – choose the option that works best for you:

Register in CDX and use basic functions for free

- Unlimited secure user accounts
- Create MDSs for unlimited sites
- Evaluate MDSs against legislations
- Create and review owned CMDs
- Import & evaluate supplier CMDs

Purchase a CDX license for 2500€ (about \$3000) annually to receive extended functions

- Request unlimited supplier CMDs
- Review and integrate supplier CMDs into your own
- Revise supplier information added to your owned CMDs
- Export IPC-1755 CFSI CMRTs

Purchase Receipt of Supplier Material Data Sheets (MDSs)

- Simple pricing structure based on company size, as measured by the number of suppliers from which a company receives data
- Review and accept or reject supplier submissions
- Incorporate supply chain MDSs into your owned MDSs

Leverage CDX based on your company's requirements – with no hidden costs or added fees.

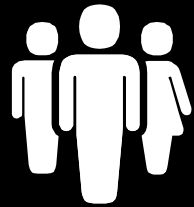
Credit Card payments now accepted

DXC is pleased to announce we now support credit card ordering for CDX MDS and CMD licenses.

- MasterCard
- Visa Card
- American Express

A screenshot of the CDX compliance.data.exchange web application. The page is titled 'Place your CDX Order' and contains a form for ordering licenses. The form includes sections for selecting currency (Euro or US Dollar), license packages (ranging from 100 to 10000 credits), and payment methods (Invoice or Credit card). The 'Credit card' option is selected. Below this, there are fields for 'Credit card provider' (set to 'MasterCard / Eurocard'), 'Credit card number', 'Valid-until date', 'CVV number', and 'Credit card partner' (set to 'Tetra Tech (payments in EUR and USD)'). The price is shown as '560.00 US Dollar'. A 'Start Order Process' button is at the bottom. The right sidebar shows a navigation menu with 'CDX Licenses' selected. The top navigation bar includes 'MDS', 'Functions', 'Administration', and 'Help'. The user is identified as 'LePard, Chuck'.

CDX – Backed by the Strength of DXC Technology



**Customer
experience**



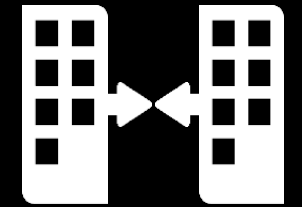
**Citizen
engagement**



**Employee
empowerment**



**IT-enabled
transformation**



**Acquisitions,
divestitures**

New, but not born yesterday.

From the team leading in cloud services, material compliance solutions and secure supply chain submissions for over 15 years



Thank you

cdx-info@dxc.com