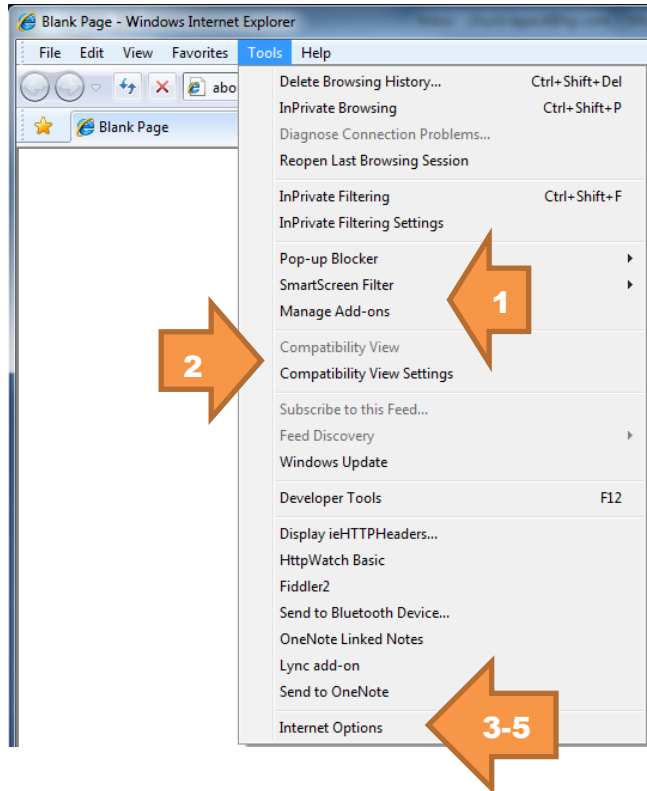


Internet Explorer (IE) Version 8.0 and above settings for CDX usage

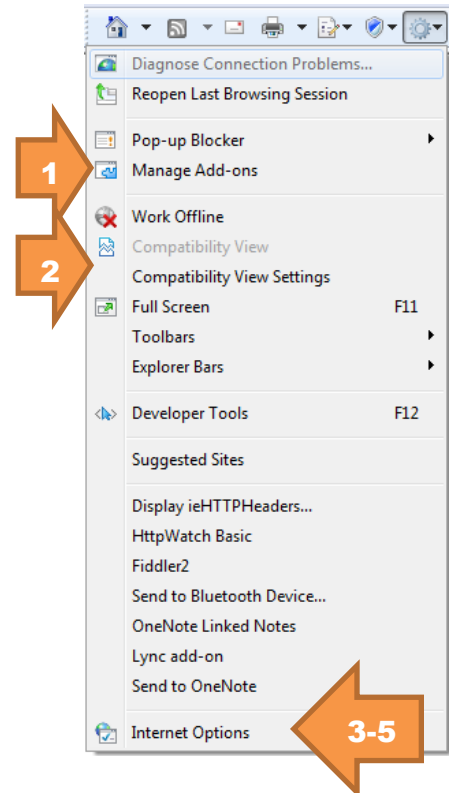
IMPORTANT: IE does not apply most setting changes until ALL open browser windows are closed. To perform the following actions, first close all browser windows and tabs. Then open one window with one tab and make the specified changes. Then close the browser and re-open it.

All of the following options are accessed from the IE “Tools” menu, or from the “Tools” button on the “Command Toolbar. Your menus will almost certainly have different options than are shown in these images, especially near the bottom of the menus.



You may have to display the Command Toolbar by right-clicking in the tabs area near the top of the browser window and placing a check next to “Command Toolbar”.

Depending upon toolbar customization settings, the Tools button may appear as the word “Tools” or as a gear icon.

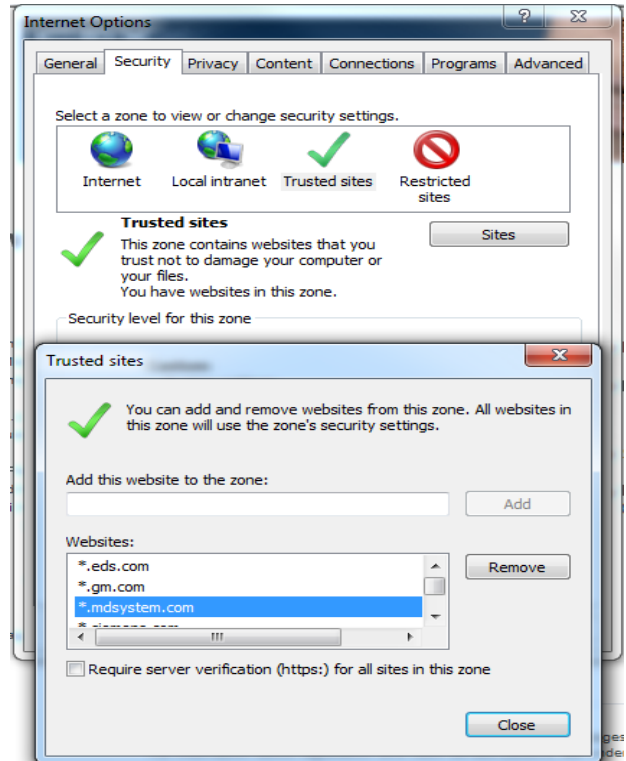


1. **Browser Add-ons** (other than security and .pdf related items) should be disabled or removed as they have the capability to interfere with the execution of the browser.
 - a. See indicator 2 in the image to locate the Manage add-ons. Select this option.
 - b. Review the active Toolbars and Extensions and disable or remove any not associated with Microsoft products, your company’s anti-virus software, Oracle Java Plugins, Adobe PDF, or with other mandatory functionality. CDX internally uses Oracle ADF, which is sensitive to incompatible plugins.
2. **Compatibility View Mode** should be disabled.
 - a. See indicator 3 in the image to locate the “Compatibility View”.
 - b. Please ensure this is disabled (greyed out)
 - c. The next option on the Tools menu is “Compatibility View Settings”.
 - i. Select this option, and if “Display all websites in Compatibility View” is checked, clear the check.
 - ii. Verify there is no form of “cdxsystem.com” in the “Websites you’ve added to Compatibility View”.
 - iii. After checking/changing these settings, select “Close” to return to the browser main window.

The remaining settings must be selected from the “Internet Options” choice at the bottom of the Tools menus.

3. Trusted Sites (See image at right)

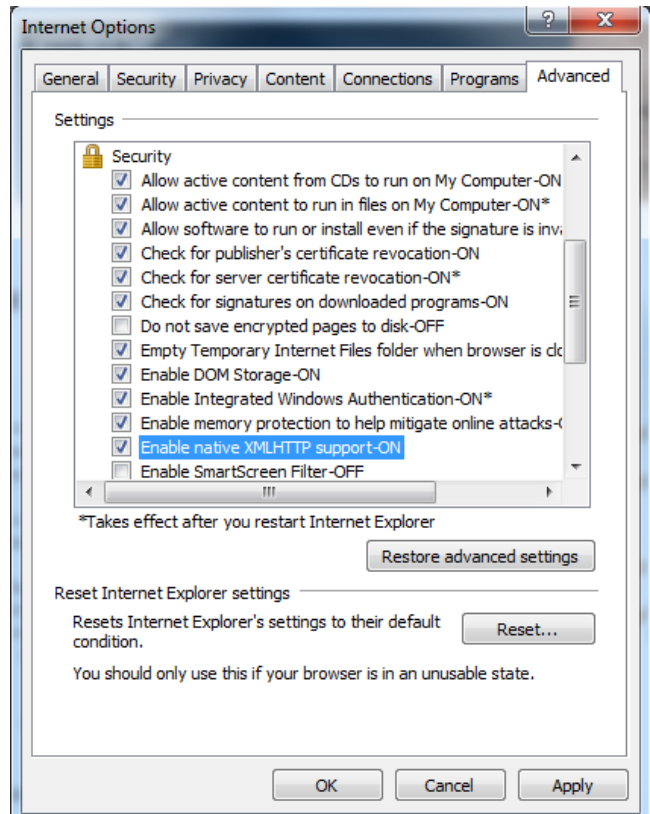
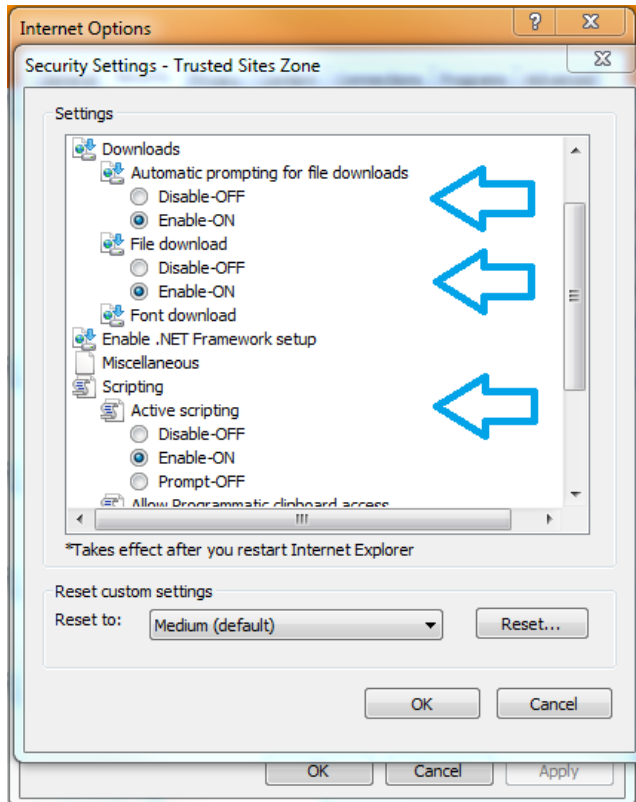
- a. On the “Security” tab, select the Trusted Sites zone.
- b. Click the Sites button.
- c. Verify *.cdxsystem.com is in the trusted websites.
- d. If it is not, please add it by entering *.cdxsystem.com in the “Add this website to the zone” box and selecting Add.
- e. You may need to clear the “Require server verification for all sites in this zone” checkbox to complete this operation.
- f. If your organizations security policies do not permit clearing this setting use https://*.cdxsystem.com.
- g. Trusted sites should have a security level of medium-low, low, or custom.



4. Security Settings (See Image below)

- a. Your security settings should be customized as shown for use with CDX. (Note: “Scroll down” in the settings list to see these options. There will be options shown expanded between Downloads & Scripting.)
- b. Your Security Settings should include the following:

Downloads – Auto Prompting: Enable-ON
Downloads - File Download: Enable-ON
Scripting – Active Scripting: Enable-ON



5. Advanced Settings (See image at right)

- a. On the “Advanced” tab, set/verify the following:
- b. **Security** – Enable native XMLHTTP Support: