

**Key Links:**

- [CDX Homepage](#)
- [CDX News](#)
- [CDX Application](#)

**Contact us:**

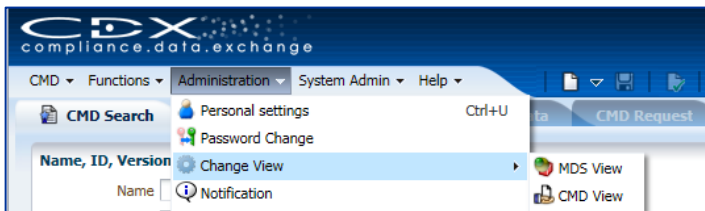
Hewlett-Packard GmbH  
 CDX Team  
 Hewlett-Packard-Str. 1  
 61352 Bad Homburg  
 GERMANY  
 Fax: +49 69 2 22 21 21 80  
 e-mail: [cdx-info@hpe.com](mailto:cdx-info@hpe.com)

**HPE's CDX – Menu restructuring for direct access to the CMD Manager**

The **CMD Manager** functionality is available in CDX to create and manage Conflict Minerals Declarations (CMDs) in response to the US Dodd-Frank Act.

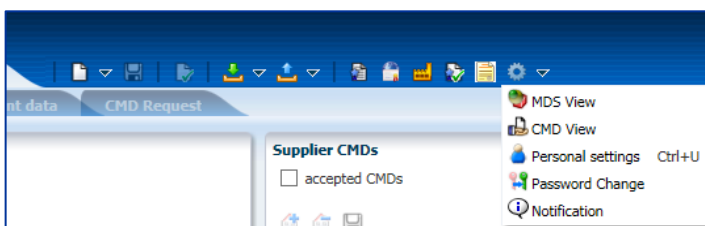
One of the changes in the new CDX release 5.1 provides users the ability to access the CMD Manager directly when logging in. The usability for those who use CDX exclusively for "Conflict Minerals" has significantly improved.

Previously, users, who only used the CMD Manager in CDX, had to work through several menu functions, to get access to the appropriate screens. Now users can begin working with their CMDs directly after the log in by adjusting the menu view according to their personal needs.



If you work only with CMDs, you should setup the "CMD view" as the default.

You can change the view in Administration Menu => Change View.



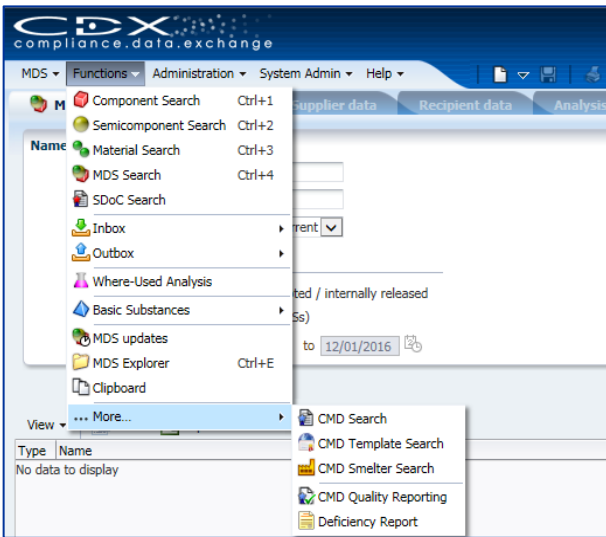
Or with the new "Personal Settings" button in the Toolbar.

In general, the MDS view is set as the default view. If you change the view to the CMD view, this view will apply for your User ID the next time you login and you can begin working directly in the Conflict Minerals Manager.

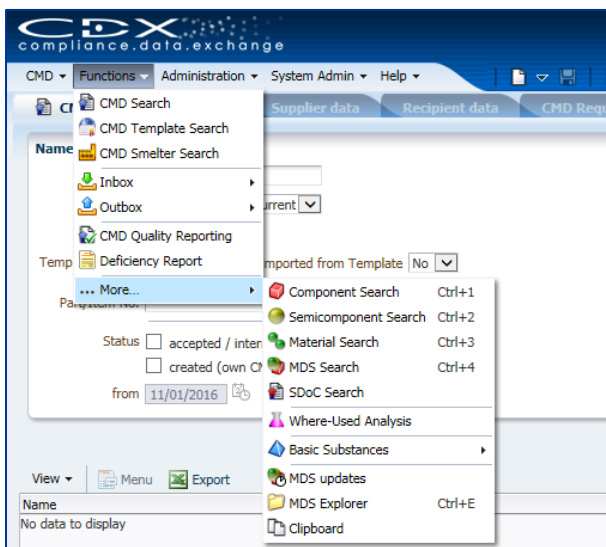
If your focus is more on MDSs, please use the "MDS View" as your view and you can start working on your MDSs the next time you login.

If your focus is on both MDSs and CMDs, you can always change the view of the menu structure while you are using CDX without logging out and logging into CDX.

Regardless of which user view you are working with, the functionalities of the other user view are always visible under Functions => More.



If you are in the CMD View, select Functions => ... More => to see the MDS functions.



If you are in the MDS View, select Functions => ... More => to see the CMD functions.

The full CMD Manager functionalities remain available in CDX. Using the **Inbox & Outbox** in CDX, you can forward Conflict Minerals Declarations (CMDs) to your customers and suppliers quickly and transparently. The **CMD Quality Reporting and the Deficiency Report** as well as various **Statistics** allow you to check and improve the quality of your CMDs. You can initiate external CMD inquiries with the **e-mail process** and CDX supports integration into your **ERP/PLM system** with **CDX Web Services**.

People who use the CMD Manager because of client requirements now have even more reason to license the CMD Manager for their own company and use CDX for their suppliers – at an unbeatable price.

If you need more information, please contact the CDX Team at [cdx-info@hpe.com](mailto:cdx-info@hpe.com).