

CDX – First Steps Guide

IMPORT MDS FROM IMDS INTO CDX

MDBs already available in IMDS of the Automotive Suppliers, which are also used for other industries, can be imported into the CDX and further processed without re-entering them in CDX.

The import of MDSs can be initiated out of CDX when the following requirements are fulfilled:

- The IMDS company owns a **valid IMDS AI license**.
- After the import function has been started, the CDX user must log in with his **valid IMDS login credentials** (IMDS user ID and password) in order to select an IMDS MDS and import it into CDX.
- Data import from IMDS to CDX is **in line with IMDS Terms of Use (ToU)**.

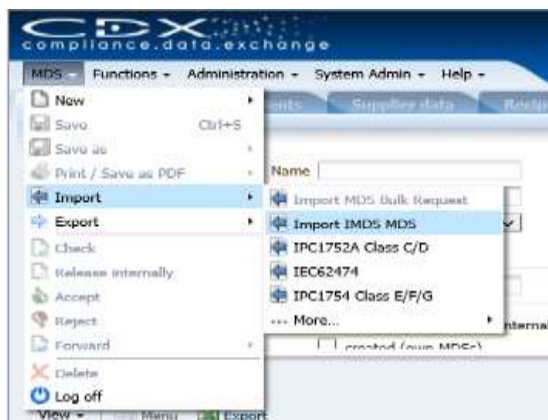
In addition

- A CDX License is **not required**.
- IMDS MDSs are imported into CDX, but **not the other way** (i.e. MDSs are not exported from CDX and imported into IMDS). The data transfer is only possible in one direction.

Functionality in CDX:

The IMDS/CDX Data exchange is initiated by selecting the menu MDS => Import => "Import IMDS MDS".

Similar to other import functions an import wizard dialog is launched and the first page of the dialog is displayed. Here the user needs to log into IMDS using his IMDS credentials.



After the user's log on, the system checks whether the user has a valid IMDS AI license. If this check succeeds, the next page of the wizard is displayed, allowing the user to search for MDSs to be imported.

Up to 10 MDSs can be selected from the result list to be transferred to CDX.

When the import is complete, the imported MDS is stored in CDX as an own MDS in edit mode to allow the user to rework or complete the datasheet with CDX specific information.

In addition, an IMDS import protocol (pdf document) is stored with detailed information about applied conversions on the MDS during the transfer process.

→ **Detailed instructions on how to Import an MDS can be found in the CDX user manual under the entry "Import / Export an MDS".**

USEFUL INFORMATION

CDX Website and Additional Services and Tools

www.cdssystem.com

Contact:

CDX Service Desk

e-mail: cdx-servicedesk@dxc.com